



MODULAR FIXTURES (CAGE NUTS)



Stainless steel channel

To determine your modular fixture:

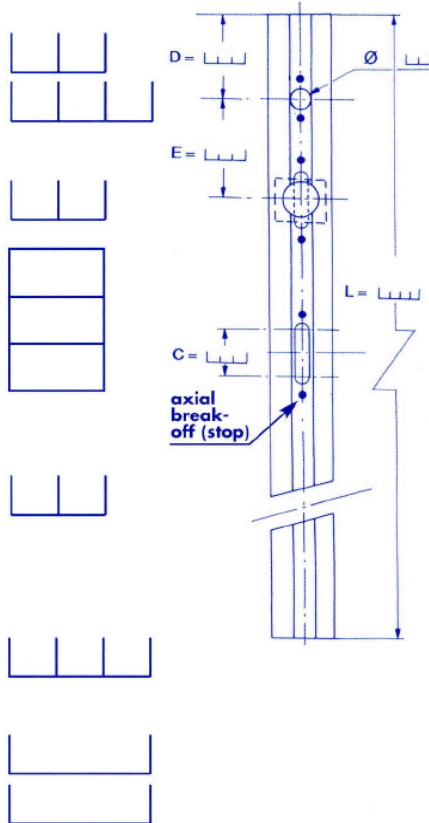
A) Specify the reference of the profile

B) Fill in the following sizes C, D, E, L and diameter opposite

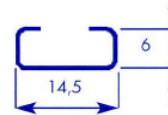
opposite

C) Specify the:

- Number of screws and length
- or
- Number of self-locking nuts slotted or self-locking startnuts or non self-locking
- Diameter of these fixtures : M
- Number of identical modular fixtures
- Quality of class for screws or nuts

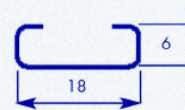


Ref. 201144



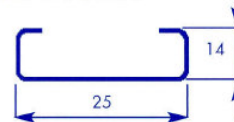
**Material : Z6 CN
1809 (AISI 304)**

Ref. 203010



**Material : Z2 CN 810
(AISI 304L)**

Ref. 203326



**Material : Z2 CN
1810 (AISI 304L)**

Ref. 203048



**Material : Z2 CN
1810 (AISI 304L)**

Ease of use:

- From 25 mm to 6 meters long;
- Unlimited quantity of nuts and/or screws can be positioned within the channel;
- Range of diameter for nuts and / or screws;
- Range of type of nuts and/or screws (combination possible);
- Equal spacing between products;
- Internal technical setup (oval holes, lights, spring mounts, prepunched rivet holes);
- Channels may be manufactured straight, bent and/or curved.

For special applications and inserts, please do not hesitate to contact us.

6600 Trans Canada Hwy, suite 750 Pointe-Claire, QC, H9R 4S2 Canada

T: (514)694-3250

F: (514)694-9095

e-mail: info@reduce-downtime.com

www.reduce-downtime.com



MODULAR FIXTURES (CAGE NUTS)



Equiped channel	Nut ∇	Nut ∇ starnuts locking	Nut ∇ 2 slots-locking	Square head ∇ screw
	d : M3 to M5 	d : M3 to M5 	d : M3 to M5 	d : M3 to M6
	d : M3 to M8 	d : M3 to M8 	d : M3 to M8 	d : M3 to M8
	d : M6 to M12 	d : M6 to M12 	d : M6 to M10 	d : M8 to M12
	d : M6 à M10 	d : M6 à M10 	d : M6 à M8 	d : M6 à M12

FASTENERS

Threading: Standard to NF ISO 262 / NF ISO 965-2

Characteristic and performance tests: NF EN ISO 2320 / NF EN ISO 3506-2

Material: - Stainless steel A2-70
- Steel grade 5 / class 8.8

Surface treatment: STAINLESS STEEL - ANTIGALLING : - STANAL 400 (Standard to ROHS requirements)
- SHERARDISATION

- PASSIVATION

STEEL - All treatments (Standard to ROHS requirements)

Field of application: Contact us

6600 Trans Canada Hwy, suite 750 Pointe-Claire, QC, H9R 4S2 Canada

T: (514)694-3250 F: (514)694-9095 e-mail: info@reduce-downtime.com www.reduce-downtime.com