



MODULAR FIXTURES (CAGE NUTS)



Light alloy Channel

To determine your modular fixture:

A) Specify the reference of the profile

B) Fill in the following sizes C, D, E, L and diameter opposite

C) Specify the:

• Number of screws and length

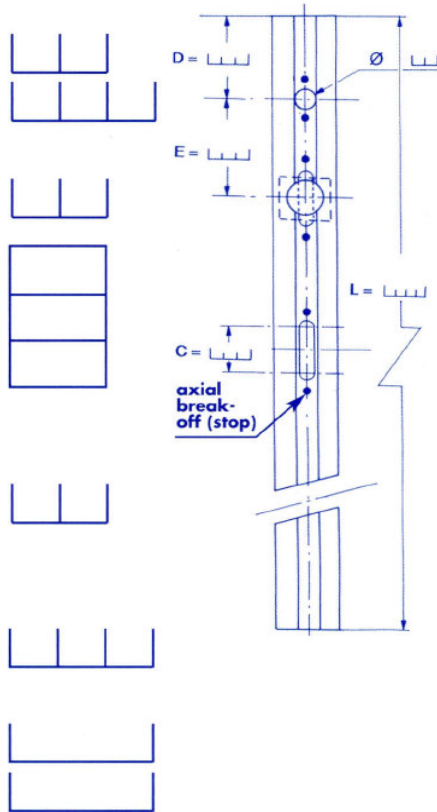
or

• Number of self-locking nuts slotted or self-locking starnuts or non self-locking

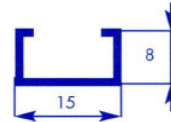
• Diameter of these fixtures : M

• Number of identical modular fixtures

• Quality of class for screws or nuts



Ref. 101000



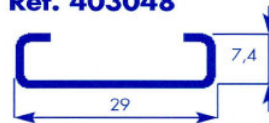
**Material : A
GS T5 (AISI
6060)**

Ref. 403010



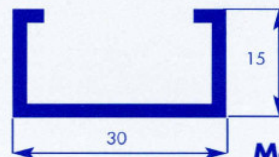
**Material : A5
(AISI 1050 A)**

Ref. 403048



**Material : A5
(AISI 1050 A)**

Ref. 501000



**Material : A
GS T5 (AISI
6060)**

Ease of use:

- From 25 mm to 6 meters long;
- Unlimited quantity of nuts and/or screws can be positioned within the channel ;
- Range of diameter for nuts and / or screws;
- Range of type of nuts and/or screws (combination possible);
- Equal spacing between products;
- Internal technical setup (oval holes, lights, spring mounts, prepunched rivet holes);

For special applications and inserts, please do not hesitate to contact us.

6600 Trans Canada Hwy, suite 750 Pointe-Claire, QC, H9R 4S2 Canada

T: (514)694-3250

F: (514)694-9095

e-mail: info@reduce-downtime.com

www.reduce-downtime.com



MODULAR FIXTURES (CAGE NUTS)



Equiped channel	Nut \varnothing	Nut \varnothing starnuts locking	Nut \varnothing 2slots-locking	Square \varnothing head screw
	d : M3 to M5 	d : M3 to M5 	d : M3 to M5 	d : M3 to M6
	d : M3 to M8 	d : M3 to M8 	d : M3 to M8 	d : M3 to M8
	d : M6 to M10 	d : M6 to M10 	d : M6 to M10 	d : M6 to M12
	d : M6 à M10 	d : M6 à M10 	d : M6 à M10 	d : M6 à M12

FASTENERS

Threading : standard to NF ISO 262 / NF ISO 965-2

Characteristic and performance tests: NF EN ISO 2320

Material : - Steel grade 5 / class 8

- Brass, Aluminium

Surface treatment: All treatments (Standard to ROHS requirements)

Field of application : Contact us

6600 Trans Canada Hwy, suite 750 Pointe-Claire, QC, H9R 4S2 Canada

T: (514)694-3250

F: (514)694-9095

e-mail: info@reduce-downtime.com

www.reduce-downtime.com